

产品特性/Product Features

IP6K9K

30A 85°C

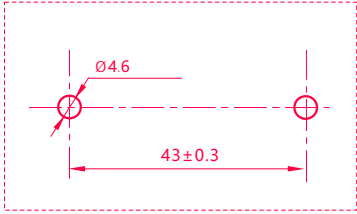
12-750VDC

1000M Ω (1000VDC) , IEC 60664-

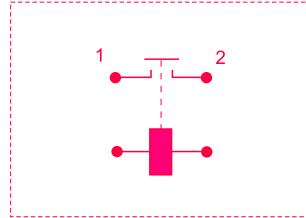
1

安装孔尺寸 / 接线图 Mounting hole size/Wiring diagram

Mounting hole size

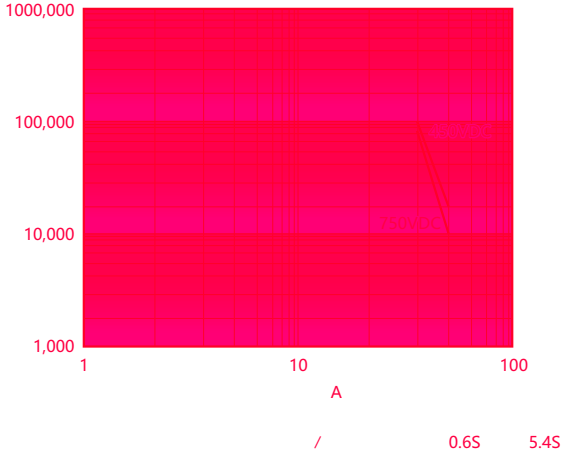


Wiring diagram

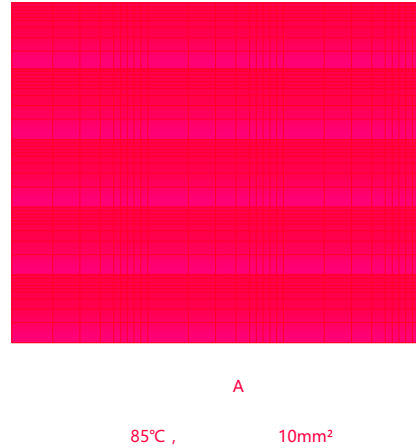


性能曲线图 Performance graph

Electrical life curve



Tolerance curve



使用注意事项 Precautions for use

1

M4	1.8N·m 2.7N·m	Ø4.0~Ø4.5mm	3mm	M4螺钉	1.8N·m~2.7N·m
----	---------------	-------------	-----	------	---------------

2

10mm²

3

3mm

声明/Statement: